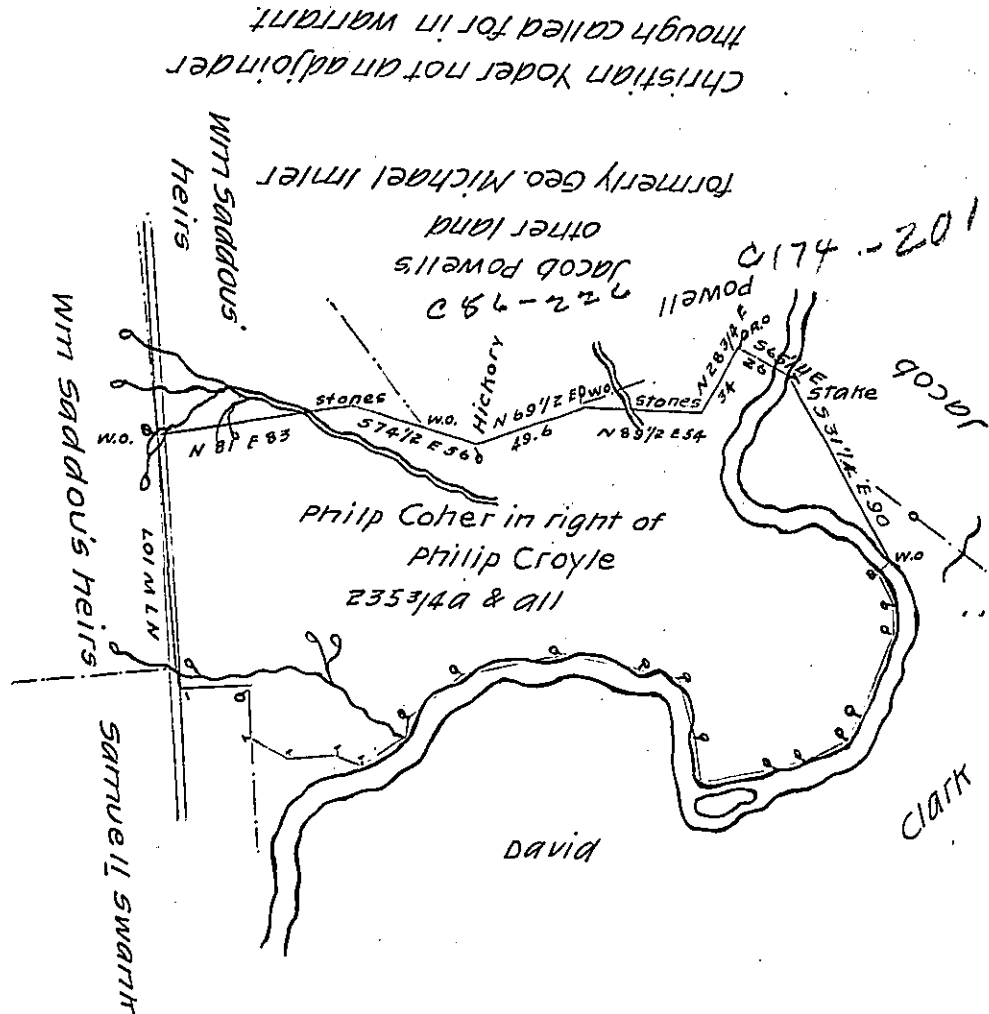


Bearings & Distances from w.o. to beg

- 530 1/4 W 6 R.O. across creek
- 530 1/4 E 14.5 WO
- 53 1/2 E 14 WO
- 520 W 33.7 WO
- 533 1/2 W 10.5 Hickory
- 565 W 20 WO
- 570 1/4 W 13 WO in road
- 576 1/4 W 34 waters edge
- N 17 W 20 red oak
- N 16 W 26 WO
- N 82 W 54 WO
- 577 W 45 Hickory
- 550 W 30 Ash
- 512 1/2 W 8 in run
- 555 W 22 stake
- N 71 W 10.5 stake
- 584 W 21 stake
- N 63 1/2 W 19.4 stake
- N 4 W 21.4 Red oak
- 585 1/2 W 32.8 stake - Bg.



Situate (formerly in Quernationing township Bedford County now.)
 in Quernationing & Shade Townships, Somerset County
 and surveyed January 18th 1838
 in pursuance of a warrant dated August 15th 1793 and certified August
 20th 1839

Pr. H. L. Holbrook Deputy

To Jacob Sallade Esqr

Surveyor General

IN TESTIMONY that the above is a copy of the original remaining on file in
 the Department of Internal Affairs of Pennsylvania, made
 conformably to an Act of Assembly approved the 16th day of
 February, 1833, I have hereunto set my Hand and caused
 the Seal of said Department to be affixed at Harrisburg,
 this ninth day of August 1904

Isaac B. Benson
 Secretary of Internal Affairs